

## Notes:

- Manufactured by spirally winding a preformed metal strip and a filler on the outer periphery of inner ring or metal winding mandrels.
- Ability to recover under variable loads, resist at pressure and temperature fluctuations across the flange faces, high bolt stress relaxation and creep.
- Flange face surface within the following range Ra 3.2 to 6.3  $\mu\text{m}$ .  
Required gasket compression for optimum sealing performance:

Initial gasket thickness	Recommended compressed thickness
1.6 mm	1.3 / 1.4 mm
2.5 mm	1.9 / 2.0 mm
3.2 mm	2.3 / 2.5 mm
4.5 mm	3.2 / 3.4 mm
6.4 mm	4.6 / 5.1 mm
7.2 mm	5.1 / 5.6 mm

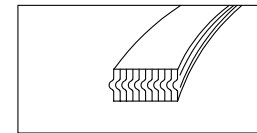
Spiral wound gaskets with internal/external rings should be fully compressed to the guide ring.

## • Gasket seating factors:

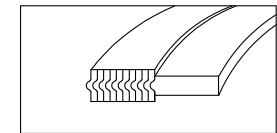
Material	Factor m	Factor y (PSI)
Carbon	2.50	10000
Stainless steel/Monel	3.00	10000

## Typical sections :

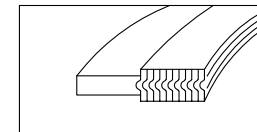
SW 00



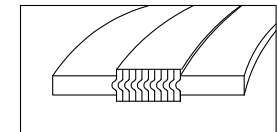
SW 01



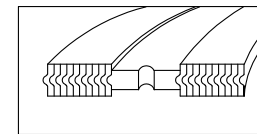
SW 10



SW 101



Special

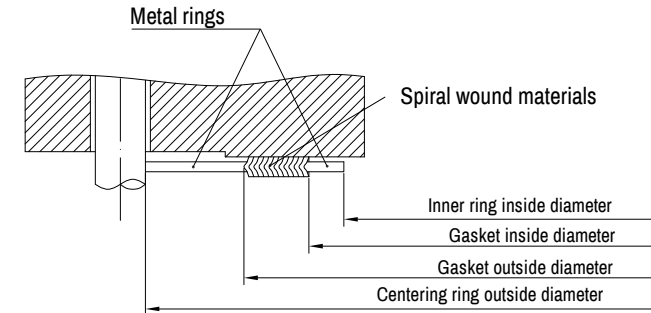


## MATERIAL / TEMPERATURE / PRESSURE

MATERIALS	T Min	T Max	Filler Graphite Max. Temp.	Pressure Max with Graphite	Filler PTFE Max. Temp.	Pressure Max with PTFE	Filler Micatherm Max. Temp.	Pressure Max with Micatherm
SS304L	-200 C°	500 C°	550 C°	150 bar	250 C°	100 bar	1000 C°	120 bar
SS3016L	-200 C°	500 C°	550 C°	150 bar	250 C°	100 bar	1000 C°	120 bar
SS321	-250 C°	550 C°	550 C°	150 bar	250 C°	100 bar	1000 C°	120 bar
SS347	-250 C°	550 C°	550 C°	150 bar	250 C°	100 bar	1000 C°	120 bar
Alloy400	-130 C°	600-950 C°	550 C°	150 bar	250 C°	100 bar	1000 C°	120 bar
Alloy600	-130 C°	600-950 C°	550 C°	150 bar	250 C°	100 bar	1000 C°	120 bar
Alloy625	-130 C°	600-950 C°	550 C°	150 bar	250 C°	100 bar	1000 C°	120 bar
Alloy800	-130 C°	600-950 C°	550 C°	150 bar	250 C°	100 bar	1000 C°	120 bar
Alloy825	-130 C°	600-950 C°	550 C°	150 bar	250 C°	100 bar	1000 C°	120 bar
Hastelloy C276	-200 C°	450 C°	550 C°	150 bar	250 C°	100 bar	1000 C°	120 bar
Titanium	-250 C°	350 C°	550 C°	150 bar	250 C°	100 bar	1000 C°	120 bar



ABO type SW 01  
SW 10  
SW 101

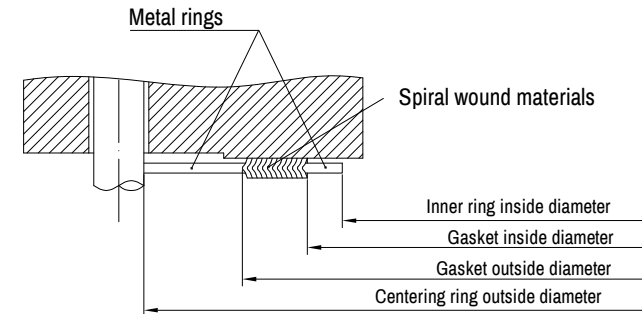


## STANDARD SPIRAL WOUND FOR ANSI B16.5 FLANGES

Flange size (NPS) inches	Inner-ring inside diameter (mm)							Gasket inside diameter (mm)							Gasket outside diameter (mm)		Centering ring outside diameter (mm)							
	150	300	400	600	900	1500	2500	150	300	400	600	900	1500	2500	150	900	2500	150	300	400	600	900	1500	2500
1/2	14.2	14.2	14.2	14.2	14.2	14.2	14.2	19.1	19.1	19.1	19.1	19.1	19.1	19.1	31.8	31.8	47.8	54.1	54.1	54.1	54.1	63.5	63.5	69.9
3/4	20.6	20.6	20.6	20.6	20.6	20.6	20.6	25.4	25.4	25.4	25.4	25.4	25.4	25.4	39.6	39.6	57.2	66.8	66.8	66.8	66.8	66.8	69.9	76.2
1	26.9	26.9	26.9	26.9	26.9	26.9	26.9	31.8	31.8	31.8	31.8	31.8	31.8	31.8	47.8	47.8	66.8	73.2	73.2	73.2	73.2	79.5	79.5	85.9
1 1/4	38.1	38.1	38.1	38.1	33.3	33.3	33.3	47.8	47.8	47.8	47.8	39.6	39.6	39.6	60.5	60.5	76.2	82.6	82.6	82.6	82.6	88.9	88.9	104.9
1 1/2	44.5	44.5	44.5	44.5	41.4	41.4	41.4	54.1	54.1	54.1	54.1	47.8	47.8	47.8	69.9	69.9	85.9	95.3	95.3	95.3	95.3	98.6	98.6	117.6
2	55.6	55.6	55.6	55.6	52.3	52.3	52.3	69.9	69.9	69.9	69.9	58.7	58.7	58.7	85.9	85.9	104.9	111.3	111.3	111.3	111.3	143.0	143.0	146.0
2 1/2	66.5	66.5	66.5	66.5	63.5	63.5	63.5	82.6	82.6	82.6	82.6	69.9	69.9	69.9	98.6	98.6	124.0	130.3	130.3	130.3	130.3	165.1	165.1	168.4
3	81.0	81.0	81.0	78.7	78.7	78.7	78.7	101.6	101.6	101.6	101.6	95.3	95.3	95.3	120.7	120.7	136.7	149.4	149.4	149.4	149.4	168.4	174.8	196.9
4	106.4	106.4	102.6	102.6	102.6	97.8	97.8	127.0	127.0	120.7	120.7	120.7	117.6	117.6	149.4	149.4	174.8	181.1	177.8	193.8	206.5	209.6	235.0	
5	131.8	131.8	128.3	128.3	128.3	124.5	124.5	155.7	155.7	147.6	147.6	147.6	143.0	143.0	177.8	177.8	196.9	215.9	212.9	241.3	247.7	254.0	279.4	
6	157.2	157.2	154.9	154.9	154.9	147.3	147.3	182.6	182.6	174.8	174.8	174.8	171.5	171.5	209.6	209.6	222.3	251.0	247.7	266.7	289.1	282.7	317.5	
8	215.9	215.9	205.7	205.7	196.8	196.8	196.8	233.4	233.4	225.6	225.6	222.3	215.9	215.9	263.7	263.7	279.4	306.1	304.8	320.8	358.9	352.6	387.4	
10	268.2	268.2	255.2	255.2	246.1	246.1	246.1	287.3	287.3	274.6	274.6	274.6	266.7	270.0	317.5	311.2	339.9	362.0	358.9	400.1	435.1	435.1	476.3	
12	317.5	317.5	307.3	307.3	292.1	292.1	292.1	339.9	339.9	327.2	327.2	323.9	323.9	317.5	374.7	368.3	409.7	422.4	419.1	457.2	498.6	520.7	549.4	
14	349.3	349.3	342.9	342.9	320.8	320.8	-	371.6	371.6	362.0	362.0	355.6	362.0	-	406.4	400.1	450.9	485.9	482.6	492.3	520.7	577.9	-	
16	400.1	400.1	389.9	389.9	374.7	368.3	-	422.4	422.4	412.8	412.8	412.8	406.4	-	463.6	457.2	514.4	539.8	536.7	565.2	574.8	641.4	-	
18	449.3	449.3	438.2	438.2	425.5	425.5	-	474.7	474.7	469.9	469.9	463.6	463.6	-	527.1	520.7	549.4	596.9	593.9	612.9	638.3	704.9	-	
20	500.1	500.1	489.0	489.0	482.6	476.3	-	525.5	525.5	520.7	520.7	520.7	514.4	-	577.9	571.5	606.6	654.1	647.7	682.8	698.5	755.7	-	
24	603.3	603.3	590.6	590.6	590.6	577.9	-	628.7	628.7	628.7	628.7	628.7	616.0	-	685.8	679.5	717.6	774.7	768.4	790.7	838.2	901.7	-	



ABO type SW 01  
SW 10  
SW 101

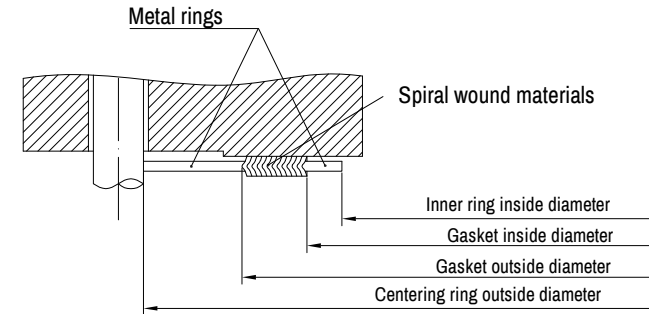


## STANDARD SPIRAL WOUND FOR ANSI B16.47 SERIES A

Flange size (NPS) inches	Inner-ring inside diameter (mm)					Gasket inside diameter (mm)					Gasket outside diameter (mm)					Centering ring outside diameter (mm)				
	150	300	400	600	900	150	300	400	600	900	150	300	400	600	900	150	300	400	600	900
26	654.1	654.1	660.4	647.7	660.4	673.1	685.8	685.8	685.8	685.8	704.9	736.6	736.6	736.6	736.6	774.7	835.2	831.9	866.9	882.7
28	704.9	704.9	711.2	698.5	711.2	723.9	736.6	736.6	736.6	736.6	755.7	787.4	787.4	787.4	787.4	831.9	898.7	892.3	914.4	946.2
30	755.7	755.7	755.7	755.7	768.4	774.7	793.8	793.8	793.8	793.8	806.5	844.6	844.6	844.6	844.6	882.7	952.5	946.2	971.6	1010.0
32	806.5	806.5	812.8	812.8	812.8	825.5	850.9	850.9	850.9	850.9	860.6	901.7	901.7	901.7	901.7	939.8	1007.0	1003.0	1022.0	1073.2
34	857.3	857.3	863.6	863.6	863.6	876.3	901.7	901.7	901.7	901.7	911.4	952.5	952.5	952.5	952.5	990.6	1057.0	1054.0	1073.2	1136.7
36	908.1	908.1	917.7	917.7	920.8	927.1	955.8	955.8	955.8	958.9	968.5	1006.6	1006.6	1006.6	1009.7	1047.8	1117.6	1117.6	1130.3	1200.2
38	958.9	952.5	952.5	952.5	1009.7	977.9	977.9	971.6	990.6	1035.1	1019.3	1016.0	1022.4	1041.4	1085.9	1111.3	1054.1	1073.2	1104.9	1200.2
40	1009.7	1003.3	1000.3	1009.7	1060.5	1028.7	1022.4	1025.7	1047.8	1098.6	1070.1	1070.1	1076.5	1098.6	1149.4	1162.1	1114.6	1127.3	1155.7	1251.0
42	1060.5	1054.1	1051.1	1066.8	1111.3	1079.5	1073.2	1076.5	1104.9	1149.4	1124.0	1120.9	1127.3	1155.7	1200.2	1219.2	1165.4	1178.1	1219.2	1301.8
44	1111.3	1104.9	1104.9	1111.3	1155.7	1130.3	1130.3	1130.3	1162.1	1206.5	1178.1	1181.1	1181.1	1212.9	1257.3	1276.4	1219.2	1231.9	1270.0	1368.6
46	1162.1	1152.6	1168.4	1162.1	1219.2	1181.1	1178.1	1193.8	1212.9	1270.0	1228.9	1228.9	1244.6	1263.7	1320.8	1327.2	1273.3	1289.1	1327.2	1435.1
48	1212.9	1209.8	1206.5	1219.2	1270.0	1231.9	1235.2	1244.6	1270.0	1320.8	1279.7	1286.0	1295.4	1320.8	1371.6	1384.3	1324.1	1346.2	1390.7	1485.9
50	1263.7	1244.6	1257.3	1270.0	-	1282.7	1295.4	1295.4	1320.8	-	1333.5	1346.2	1346.2	1371.6	-	1435.1	1378.0	1403.4	1447.8	-
52	1314.5	1320.8	1308.1	1320.8	-	1333.5	1346.2	1346.2	1371.6	-	1384.3	1397.0	1397.0	1422.4	-	1492.3	1428.8	1454.2	1498.6	-
54	1358.9	1352.6	1352.6	1378.0	-	1384.3	1403.4	1403.4	1428.8	-	1435.1	1454.2	1454.2	1479.6	-	1549.4	1492.3	1517.7	1555.8	-
56	1409.7	1403.4	1403.4	1428.8	-	1435.1	1454.2	1454.2	1479.6	-	1485.9	1505.0	1505.0	1530.4	-	1606.6	1543.1	1568.5	1612.9	-
58	1460.5	1447.8	1454.2	1473.2	-	1485.9	1511.3	1505.0	1536.7	-	1536.7	1562.1	1555.8	1587.5	-	1663.7	1593.9	1619.3	1663.7	-
60	1511.3	1524.0	1517.7	1530.4	-	1536.7	1562.1	1568.5	1593.9	-	1587.5	1612.9	1619.3	1644.7	-	1714.5	1644.7	1682.6	1733.6	-



ABO type SW 01  
SW 10  
SW 101



## STANDARD SPIRAL WOUND FOR ANSI B16.47 SERIES B

Flange size (NPS) inches	Inner-ring inside diameter (mm)					Gasket inside diameter (mm)					Gasket outside diameter (mm)					Centering ring outside diameter (mm)				
	150	300	400	600	900	150	300	400	600	900	150	300	400	600	900	150	300	400	600	900
26	654.1	654.1	654.1	644.7	673.1	673.1	673.1	666.8	663.7	692.2	698.5	711.2	698.5	714.5	749.3	725.4	771.7	746.3	765.3	838.2
28	704.9	704.9	701.8	692.2	723.9	723.9	723.9	714.5	704.9	743.0	749.3	762.0	749.3	755.7	800.1	776.2	825.5	800.1	819.2	901.7
30	755.7	755.7	752.6	752.6	787.4	774.7	774.7	765.3	778.0	806.5	800.1	812.8	806.5	828.8	857.3	827.0	886.0	857.3	879.6	958.9
32	806.5	806.5	800.1	793.8	838.2	825.5	825.5	812.8	831.9	863.6	850.9	863.6	860.6	882.7	914.4	881.1	939.8	911.4	933.5	1016.0
34	857.3	857.3	850.9	850.9	895.4	876.3	876.3	866.9	889.0	920.8	908.1	914.4	911.4	939.8	971.6	935.0	993.9	962.2	997.0	1073.2
36	908.1	908.1	898.7	901.7	927.1	927.1	927.1	917.7	939.8	946.2	958.9	965.2	965.2	990.6	997.0	987.6	1047.8	1022.4	1047.8	1124.0
38	958.9	971.6	952.5	952.5	1009.7	974.6	1009.7	971.6	990.6	1035.1	1009.7	1047.8	1022.4	1041.4	1085.9	1044.7	1098.6	1073.2	1104.9	1200.2
40	1009.7	1022.4	1000.3	1009.7	1060.5	1022.4	1060.5	1025.7	1047.8	1098.6	1063.8	1098.6	1076.5	1098.6	1149.4	1095.5	1149.4	1127.3	1155.7	1251.0
42	1060.5	1054.1	1051.1	1066.8	1111.3	1079.5	1079.5	1076.5	1104.9	1149.4	1114.6	1117.6	1127.3	1155.7	1200.2	1146.3	1200.2	1178.1	1219.2	1301.8
44	1111.3	1124.0	1104.9	1111.3	1155.7	1124.0	1162.1	1130.3	1162.1	1206.5	1165.4	1200.2	1181.1	1212.9	1257.3	1197.1	1251.0	1231.9	1270.0	1368.6
46	1162.1	1178.1	1168.6	1162.1	1219.2	1181.1	1216.2	1193.8	1212.9	1270.0	1224.0	1254.3	1244.6	1263.7	1320.8	1255.8	1317.8	1289.1	1327.2	1435.1
48	1212.9	1200.2	1206.5	1219.2	1270.0	1231.9	1231.9	1244.6	1270.0	1320.8	1270.0	1270.0	1295.4	1320.8	1371.7	1306.6	1368.6	1346.2	1390.7	1485.9
50	1263.7	1267.0	1257.3	1270.0	-	1282.7	1317.8	1295.4	1320.8	-	1325.6	1355.9	1346.2	1371.6	-	1357.4	1419.4	1403.4	1447.8	-
52	1314.5	1317.8	1308.1	1320.8	-	1333.5	1368.6	1346.2	1371.6	-	1376.4	1406.7	1397.0	1422.4	-	1408.2	1470.2	1454.2	1498.6	-
54	1365.3	1346.2	1352.6	1378.0	-	1384.3	1384.3	1403.4	1428.8	-	1422.4	1422.4	1454.2	1479.6	-	1463.8	1530.4	1517.7	1555.8	-
56	1412.7	1428.8	1403.4	1428.8	-	1435.1	1479.6	1454.2	1479.6	-	1472.2	1524.0	1505.0	1530.4	-	1514.6	1593.9	1568.5	1612.9	-
58	1463.5	1484.4	1454.2	1473.2	-	1485.9	1535.2	1505.0	1536.7	-	1522.5	1573.3	1555.8	1587.5	-	1579.6	1655.8	1619.3	1663.7	-
60	1514.3	1505.0	1517.7	1530.4	-	1536.7	1536.7	1568.5	1593.9	-	1573.3	1574.8	1619.3	1644.7	-	1630.4	1708.6	1682.8	1733.6	-

